



2024
Wholesale

12350 James St.
Holland MI 49424
phone: 616.392.6051
wholesale@dutchvillage.com

DELFT TILES AND INSTALLATION GUIDE



IMPORTED DELFT
TILES FROM
THE NETHERLANDS

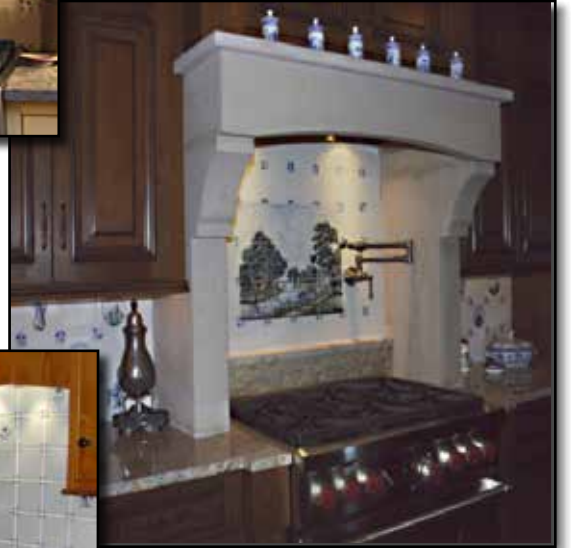
Nelis Imports

Revised 02.13.24

Photos of Tile Installations

Delft tiles have been used for centuries in home decor. They are hard wearing, water and heat resistant and can be easily cleaned. Ceramic tiles from the Netherlands are available in many attractive designs and different sizes to fit any space.

Delft tiles make attractive decorative accents, backsplashes in the kitchen and as fireplace surrounds. They are not recommended, however for outdoor use or as flooring tile. All tiles are imported from the Netherlands.



Nelis' Imports

12350 James Street Holland MI 49424
ph: 616.392.6051 e-mail: wholesale@dutchvillage.com

This wholesale catalog is available as a pdf and may be viewed or printed directly from our website at wholesale.dutchvillage.com. Prices can change without notice. © Nelis' Dutch Village

Wholesale Tile Guide

Last Revised: February 13 2024

Page 2 of 43

Step 1: Deciding Which Company to Use

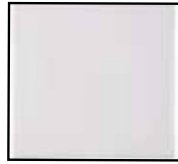
(tiles from different companies cannot be mixed)

The Blueware Tile Company

5" Tile
High Quality
Screen Print



Field Tile
w/corners



Field Tile
no/corners



Blue & White



Poly Chrome

Company Product Details:

- > 5" Tile - actual dimensions are 5 1/8" x 5 1/8"
- > Thickness: 3/8"
- > Moderately priced
- > Background color: white
- > Designs: Screen-print, either Blue and White or Multi-color (poly chrome)
- > Finish: Uncracked (crackle finish not available)
- > Tableaus available

The Harlinger Tile Company

5" Tile
Hand Painted by
skilled
artists



Field Tile Cracked
(With corner designs)



Field Tile Uncracked
(With corner designs)



Blue & White



Poly Chrome

Harlinger Tiles are
available cracked (in stock)
or uncracked (special order).

Company Product Details:

- > 5" Tile - actual dimensions are 5 1/8" x 5 1/8"
- > Thickness: 1/4"
- > Higher priced
- > Background color: soft blue-grey
- > Designs: Hand-formed and Hand-painted
Either Blue and White or Multi-color (poly chrome)
- > Finish: Cracked in stock (Uncracked available by special order only)
- > Tableaus available

Nelis' Imports

12350 James Street Holland MI 49424
ph: 616.392.6051 e-mail: wholesale@dutchvillage.com

This wholesale catalog is available as a pdf and may be viewed or printed directly from our website at wholesale.dutchvillage.com. Prices can change without notice. © Nelis' Dutch Village

Wholesale Tile Guide

Last Revised: February 13 2024

Page 3 of 43

Step 2: Estimating Tiles for Your Project

The first step is to measure the area that you wish to tile. Calculate the width times the height of the area to be covered. Do this for each area to be tiled, and then add the figures to find your total wall square footage. We recommend adding ten percent to this figure for overage.

Example:

Wall Area #1: 31" high x 11" wide = 341 sq. inches (2.36 sf)

Wall Area #2: 31" high x 11" wide = 341 sq. inches (2.36 sf)

Wall Area #3: 18" high x 50" wide = 900 sq. inches (6.25 sf)

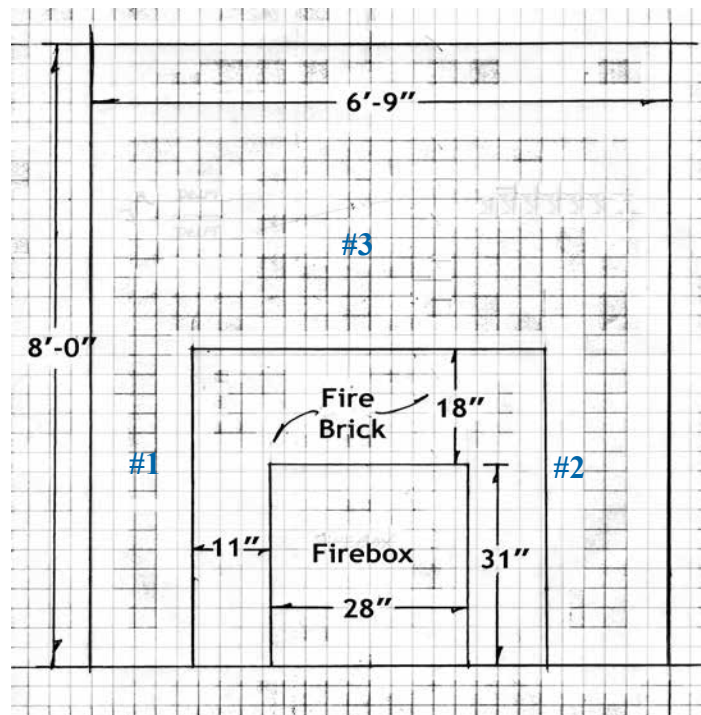
$$2.36 + 2.36 + 6.25 = 10.97 \text{ sq. feet}$$

$$+ 10\% (\times 1.1) = 12.06 \text{ sq. feet}$$

Tile Size	# of tiles per sq. foot	# of tiles needed for this example
5" tile	6	72

When the dimensions are not an exact fit, we recommend the use of border tiles and / or cutting tiles to fit. This will reduce the number of tiles needed.

*This formula is an approximation for estimating purposes, we recommend that drawings of each installation project be submitted to a professional for review.



Step 3: Ordering Your Tiles

The Blueware Tile Factory

is a subsidiary of the Royal Delft factory in the city of Delft. They produce a beautiful, handformed and affordable delft pottery tile using a high quality screen-print process.

These tiles are ideal for kitchen backsplashes, fireplace surrounds, bathrooms or as individual art pieces. There are 14 different series in the Blueware line. Each series has between four and eight different designs.

Specifications:

Size: While Blueware is considered a 5" tile, the exact dimensions are 5 1/8" x 5 1/8". Thickness is 3/8 inch.

Options available:

White Background: Blue and Multicolor scenes

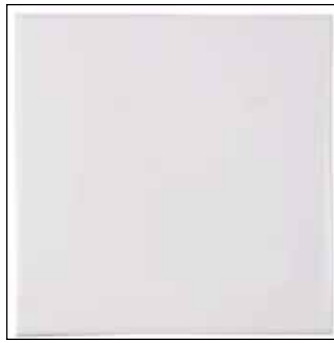
Wholesale Prices:

- Blue Scene Tiles: \$ 28.00 each
- Multicolor Scene Tiles: \$ 28.00 each
- Field Tiles (**no** corner design): \$ 13.00 each
- Field Tiles (**with** corner design): \$ 21.00 each

- Prices are subject to change without notice.
- 15% restocking fee on returns after 30 days.
- No returns on special orders accepted.
- Special orders please allow a minimum of 12 - 16 weeks



Field Tiles with corners
#057111



Field Tiles without corners
#057110

Blueware Trades - Blue & White



051031.1 - Cooper



051031.2 - Blacksmith



051031.3 - Seat Weaver



051031.4 - Milkmaid



051031.5 - Carpenter



051031.6 - Lumberjack



051031.7 - Basketmaker



051031.8 - Tanner

Blueware Trades - Multicolor



051032.1 - Seat Weaver



051032.2 - Milkmaid

Blueware Child's Play - Blue & White



051521.1 - Rope Jumping



051521.2 - Kite Flying



051521.3 - Hoop Rolling



051521.4 - Leapfrog



051521.5 - Spinning Tops



051521.6 - Sled Riding



051521.7 - Walking on Stilts



051521.8 - Swinging

Blueware Child's Play - Multicolor



051522.1 - Rope Jumping



051522.3 - Hoop Rolling

Blueware Flowers



051661.1



051661.2



051662.1

Blueware Ships - Blue & White



052211.1



052211.3



052211.4

Blueware Ships - Multicolor



052212.1

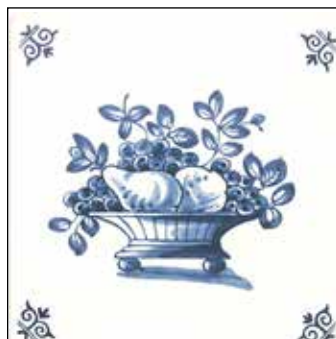


052212.3

Blueware Fruit Baskets - Blue & White



053771.3



053771.4

Blueware Fruit Baskets - Multicolor



053772.2

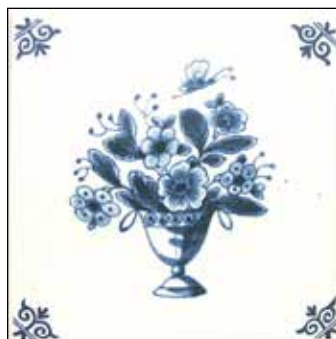


053772.3

Blueware Flowers in Vase - Blue & White

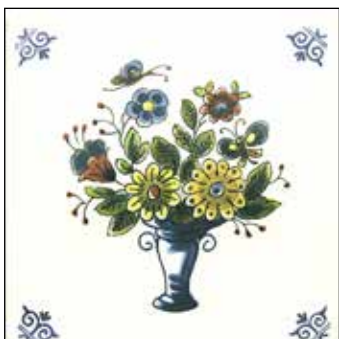


053781.3

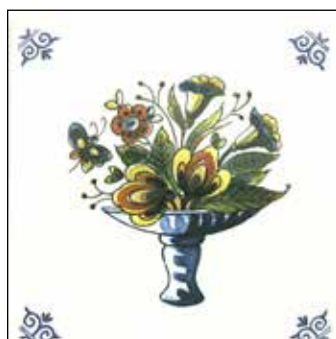


053781.4

Blueware Flowers in Vase - Multicolor



053782.1



053782.2

Nelis' Imports

12350 James Street Holland MI 49424
ph: 616.392.6051 e-mail: wholesale@dutchvillage.com

This wholesale catalog is available as a pdf and may be viewed or printed directly from our website at wholesale.dutchvillage.com. Prices can change without notice. © Nelis' Dutch Village

Wholesale Tile Guide

Last Revised: February 13 2024

Page 9 of 43

Blueware Birds - Blue & White



057011.2



057011.3



057011.5

Blueware Birds - Multicolor



057012.3



057012.4

Blueware Landscapes - Blue & White



057061.1



057061.2



057061.3



057061.4



057061.5



057061.6

Blueware Landscapes - Multicolor



057062.1



057062.2

Blueware Windmills - Blue & White



057181.1



057181.2



057181.3



057181.4



057181.6



057181.7

Blueware Windmills - Multicolor



057182.1



057182.4

Step 3: Ordering Your Tiles

The Harlinger Factory

re-established itself as a manufacturer of beautiful hand-painted tiles once produced during the 16th & 17th century. Their hand-formed and hand-painted tiles are each unique in character and style, honoring the now rare techniques applied centuries ago by tile craftsmen.

Tile production begins by purifying the clay and mixing it with water. It is then placed in a de-airing mill to extract the air. Next, it is rolled to approximately 8mm thick and left to dry overnight. The tile maker molds the clay with the same basic tools as was used for the past four centuries. After the tile is dried and fired for first time, it is covered in a tin glaze. Once the first glazing is complete, the tile is hand painted by skilled artists and then re-glazed and fired in the kiln. Each artist's individual style remains visible in this age old process.

Specifications:

Size: While Harlinger is considered a 5" tile, the exact dimensions are 5 1/8" x 5 1/8". Thickness: 1/4"

Options Available:

- Cracked Glaze
- Uncracked Glaze
- Can be ordered with or without corner designs
- Special orders please allow a minimum of 12 - 16 weeks

Wholesale Prices: (with Crackle Finish)

• Blue Scene Tiles:	\$64.00 each
• Multicolor Scene Tiles:	\$72.00 each
170400 • Field Tiles (no corner designs):	\$ 8.75 each
170413 • Field Tiles (UNCRACKLED with corner designs):	\$15.75 each
170411 • Field Tiles (CRACKLED with corner designs):	\$16.00 each
170412 • Field Tiles with Bullnose: (CRACKLED with corner designs)	\$17.75 each
170414 • Tile Strip (with corner designs):	\$15.75 each

- Prices are subject to change without notice.
- 15% restocking fee on returns after 30 days.
- No returns on special orders accepted.



170542 Harlinger Single Tulips Multicolor



1



2



3



4



5



6

Harlinger Field Tiles Blue



170400 5" field tile, blank no corner design-crackle finish



170411 5" field tile, with corners - crackle finish



170412 5" field tile, bullnose with corners, crackle finish



170413 5" field tile, with corners - uncrackled



170414 5 x 2.5" tile strip with corners - crackled

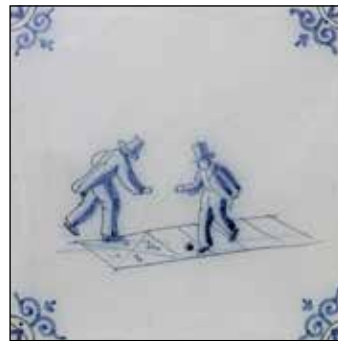
170101 Harlinger Child Play Blue



1



2



3



4



5



6



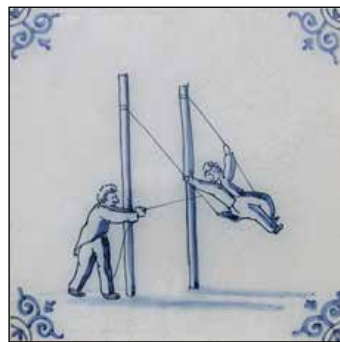
7



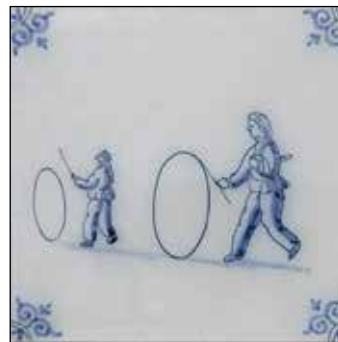
8



9



10



11



12



13



14



15



16

Nelis' Imports

12350 James Street Holland MI 49424
ph: 616.392.6051 e-mail: wholesale@dutchvillage.com

This wholesale catalog is available as a pdf and may be viewed or printed directly from our website at wholesale.dutchvillage.com. Prices can change without notice. © Nelis' Dutch Village

Wholesale Tile Guide

Last Revised: February 13 2024

Page 15 of 43

170102 Harlinger Child Play Multicolor



1



2



3



4



5



6



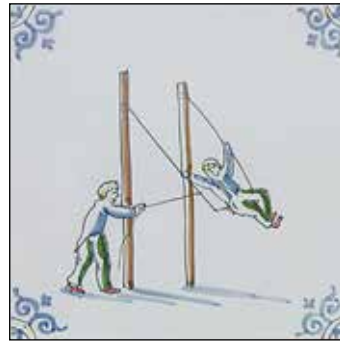
7



8



9



10



11



12



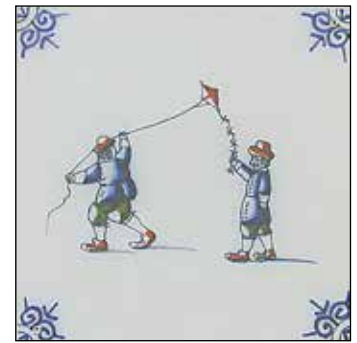
13



14



15



16

170181 Harlinger Musicians Blue



1



2



3



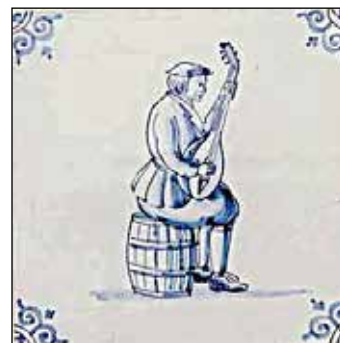
4



5



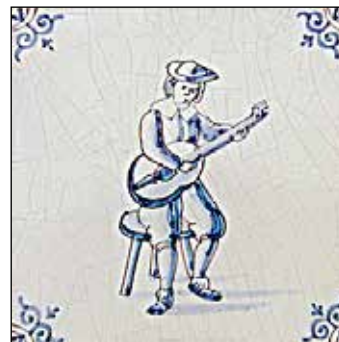
6



7



8



9



10



11



12



13



14



15



16

Nelis' Imports

12350 James Street Holland MI 49424
ph: 616.392.6051 e-mail: wholesale@dutchvillage.com

This wholesale catalog is available as a pdf and may be viewed or printed directly from our website at wholesale.dutchvillage.com. Prices can change without notice. © Nelis' Dutch Village

Wholesale Tile Guide

Last Revised: February 13 2024

Page 17 of 43

170182 Harlinger Musicians Multicolor



1



2



3



4



5



6



7



8



9



10



11



12



13



14



15



16

Nelis' Imports

12350 James Street Holland MI 49424
ph: 616.392.6051 e-mail: wholesale@dutchvillage.com

This wholesale catalog is available as a pdf and may be viewed or printed directly from our website at wholesale.dutchvillage.com. Prices can change without notice. © Nelis' Dutch Village

Wholesale Tile Guide

Last Revised: February 13 2024

Page 18 of 43

170201 Harlinger Small Flowers Blue



1



2



3



4



5



6



7



8



9



10



11



12

Nelis' Imports

12350 James Street Holland MI 49424
ph: 616.392.6051 e-mail: wholesale@dutchvillage.com

This wholesale catalog is available as a pdf and may be viewed or printed directly from our website at wholesale.dutchvillage.com. Prices can change without notice. © Nelis' Dutch Village

Wholesale Tile Guide

Last Revised: February 13 2024

Page 19 of 43

170202 Harlinger Small Flowers Multicolor



1



2



3



4



5



6



7



8



9



10



11



12

Nelis' Imports

12350 James Street Holland MI 49424
ph: 616.392.6051 e-mail: wholesale@dutchvillage.com

This wholesale catalog is available as a pdf and may be viewed or printed directly from our website at wholesale.dutchvillage.com. Prices can change without notice. © Nelis' Dutch Village

Wholesale Tile Guide

Last Revised: February 13 2024

Page 20 of 43

170211 Harlinger Planted Flowers Blue



1



2



3



4



5



6



7



8



9



10



11



12

Nelis' Imports

12350 James Street Holland MI 49424
ph: 616.392.6051 e-mail: wholesale@dutchvillage.com

This wholesale catalog is available as a pdf and may be viewed or printed directly from our website at wholesale.dutchvillage.com. Prices can change without notice. © Nelis' Dutch Village

Wholesale Tile Guide

Last Revised: February 13 2024

Page 21 of 43

170212 Harlinger Planted Flowers Multicolor



1



2



3



4



5



6



7



8



9



10



11



12

Nelis' Imports

12350 James Street Holland MI 49424
ph: 616.392.6051 e-mail: wholesale@dutchvillage.com

This wholesale catalog is available as a pdf and may be viewed or printed directly from our website at wholesale.dutchvillage.com. Prices can change without notice. © Nelis' Dutch Village

Wholesale Tile Guide

Last Revised: February 13 2024

Page 22 of 43

170241 Harlinger Landscapes Blue



1



2



3



4



5



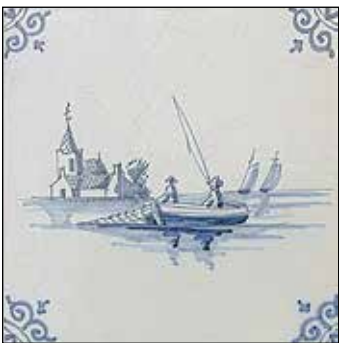
6



7



8



9



10



11



12



13



14



15



16

Nelis' Imports

12350 James Street Holland MI 49424
ph: 616.392.6051 e-mail: wholesale@dutchvillage.com

This wholesale catalog is available as a pdf and may be viewed or printed directly from our website at wholesale.dutchvillage.com. Prices can change without notice. © Nelis' Dutch Village

Wholesale Tile Guide

Last Revised: February 13 2024

Page 23 of 43

170242 Harlinger Landscapes Multicolor



1



2



3



4



5



6



7



8



9



10



11



12



13



14



15



16

Nelis' Imports

12350 James Street Holland MI 49424
ph: 616.392.6051 e-mail: wholesale@dutchvillage.com

This wholesale catalog is available as a pdf and may be viewed or printed directly from our website at wholesale.dutchvillage.com. Prices can change without notice. © Nelis' Dutch Village

Wholesale Tile Guide

Last Revised: February 13 2024

Page 24 of 43

170261 Harlinger Windmills Blue



1



2



3



4



5



6



7



8



9



10



11



12

Nelis' Imports

12350 James Street Holland MI 49424
ph: 616.392.6051 e-mail: wholesale@dutchvillage.com

This wholesale catalog is available as a pdf and may be viewed or printed directly from our website at wholesale.dutchvillage.com. Prices can change without notice. © Nelis' Dutch Village

Wholesale Tile Guide

Last Revised: February 13 2024

Page 25 of 43

170262 Harlinger Windmills Multicolor



1



2



3



4



5



6



7



8



9



10



11



12

Nelis' Imports

12350 James Street Holland MI 49424
ph: 616.392.6051 e-mail: wholesale@dutchvillage.com

This wholesale catalog is available as a pdf and may be viewed or printed directly from our website at wholesale.dutchvillage.com. Prices can change without notice. © Nelis' Dutch Village

Wholesale Tile Guide

Last Revised: February 13 2024

Page 26 of 43

170291 Harlinger Ships Blue



1



2



3



4



5



6



7



8



9



10



11



12

Nelis' Imports

12350 James Street Holland MI 49424
ph: 616.392.6051 e-mail: wholesale@dutchvillage.com

This wholesale catalog is available as a pdf and may be viewed or printed directly from our website at wholesale.dutchvillage.com. Prices can change without notice. © Nelis' Dutch Village

Wholesale Tile Guide

Last Revised: February 13 2024

Page 27 of 43

170292 Harlinger Ships Multicolor



1



2



3



4



5



6



7



8



9



10



11



12

Nelis' Imports

12350 James Street Holland MI 49424
ph: 616.392.6051 e-mail: wholesale@dutchvillage.com

This wholesale catalog is available as a pdf and may be viewed or printed directly from our website at wholesale.dutchvillage.com. Prices can change without notice. © Nelis' Dutch Village

Wholesale Tile Guide

Last Revised: February 13 2024

Page 28 of 43

170391 Harlinger Fruit Baskets Blue



1



2



3



4



5



6



7



8



9



10



11



12

170392 Harlinger Fruit Baskets Multicolor



1



2



3



4



5



6



7



8



9



10



11



12

170031 Harlinger Birds Blue



1



2



3



4



5



6



7



8



9



10



11



12

Nelis' Imports

12350 James Street Holland MI 49424
ph: 616.392.6051 e-mail: wholesale@dutchvillage.com

This wholesale catalog is available as a pdf and may be viewed or printed directly from our website at wholesale.dutchvillage.com. Prices can change without notice. © Nelis' Dutch Village

Wholesale Tile Guide

Last Revised: February 13 2024

Page 31 of 43

170032 Harlinger Birds Multicolor



1



2



3



4



5



6



7



8



9



10



11



12

Nelis' Imports

12350 James Street Holland MI 49424
ph: 616.392.6051 e-mail: wholesale@dutchvillage.com

This wholesale catalog is available as a pdf and may be viewed or printed directly from our website at wholesale.dutchvillage.com. Prices can change without notice. © Nelis' Dutch Village

Wholesale Tile Guide

Last Revised: February 13 2024

Page 32 of 43

170041 Harlinger Farm Animals Blue



1



2



3



4



5



6



7



8



9



10



11



12

170042 Harlinger Farm Animals Multicolor



1



2



3



4



5



6



7



8



9



10



11



12

Nelis' Imports

12350 James Street Holland MI 49424
ph: 616.392.6051 e-mail: wholesale@dutchvillage.com

This wholesale catalog is available as a pdf and may be viewed or printed directly from our website at wholesale.dutchvillage.com. Prices can change without notice. © Nelis' Dutch Village

Wholesale Tile Guide

Last Revised: February 13 2024

Page 34 of 43

170071 Harlinger Cats Blue



1



2



3



4



5



6



7



8



9



10



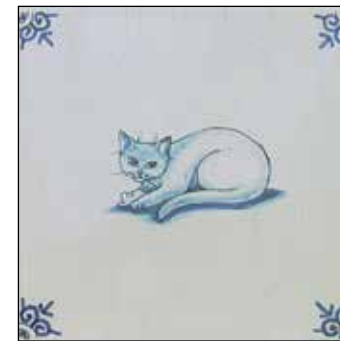
11



12



13



14



15



16

Nelis' Imports

12350 James Street Holland MI 49424
ph: 616.392.6051 e-mail: wholesale@dutchvillage.com

This wholesale catalog is available as a pdf and may be viewed or printed directly from our website at wholesale.dutchvillage.com. Prices can change without notice. © Nelis' Dutch Village

Wholesale Tile Guide

Last Revised: February 13 2024

Page 35 of 43

170072 Harlinger Cats Multicolor



1



2



3



4



5



6



7



8



9



10



11



12



13



14



15



16

Nelis' Imports

12350 James Street Holland MI 49424
ph: 616.392.6051 e-mail: wholesale@dutchvillage.com

This wholesale catalog is available as a pdf and may be viewed or printed directly from our website at wholesale.dutchvillage.com. Prices can change without notice. © Nelis' Dutch Village

Wholesale Tile Guide

Last Revised: February 13 2024

Page 36 of 43

170782 Harlinger Dogs Multicolor (only)



1



2



3



4



5



6



7



8



9



10



11



12



13



14



15



16

Nelis' Imports

12350 James Street Holland MI 49424
ph: 616.392.6051 e-mail: wholesale@dutchvillage.com

This wholesale catalog is available as a pdf and may be viewed or printed directly from our website at wholesale.dutchvillage.com. Prices can change without notice. © Nelis' Dutch Village

Wholesale Tile Guide

Last Revised: February 13 2024

Page 37 of 43

Imported Dutch Handpainted Tableaus by Harlinger



172720.30
Six tiles
Flower Basket - Blue



172710.22
Four Tiles
Fruit Basket - Poly



172720.25
Six Tiles
Potted Flowers - Poly

Call for availability and pricing

Nelis' Imports

12350 James Street Holland MI 49424
ph: 616.392.6051 e-mail: wholesale@dutchvillage.com

This wholesale catalog is available as a pdf and may be viewed or printed directly from our website at wholesale.dutchvillage.com. Prices can change without notice. © Nelis' Dutch Village

Wholesale Tile Guide

Last Revised: February 13 2024

Page 38 of 43

Imported Dutch Handpainted Tableaus by Harlinger



172710.03
Four Tile
Windmill Landscape



172710.04
Four Tile
Windmill Landscape

Call for availability and pricing



172700.04
Two Tile Ship



172720.14
Six Tiles
Winter Landscape - Blue

Nelis' Imports

12350 James Street Holland MI 49424
ph: 616.392.6051 e-mail: wholesale@dutchvillage.com

This wholesale catalog is available as a pdf and may be viewed or printed directly from our website at wholesale.dutchvillage.com. Prices can change without notice. © Nelis' Dutch Village

Wholesale Tile Guide

Last Revised: February 13 2024

Page 39 of 43

Imported Dutch Handpainted Tableaus by Harlinger



172740.11
Twelve Tile
Flower Basket - Poly

Call for availability and pricing



172720.10A
Six Tiles
Harborview without scroll



172720.10B
Six Tiles
Harborview with scroll

Nelis' Imports

12350 James Street Holland MI 49424
ph: 616.392.6051 e-mail: wholesale@dutchvillage.com

This wholesale catalog is available as a pdf and may be viewed or printed directly from our website at wholesale.dutchvillage.com. Prices can change without notice. © Nelis' Dutch Village

Wholesale Tile Guide

Last Revised: February 13 2024

Page 40 of 43

Imported Dutch Handpainted Tableaus by Harlinger



170710.07

Four Tile

Flower Basket in a circle - Poly



170720.40

Six Tile

Vegetables - Poly

Call for availability and pricing



170720.11

Six Tile

Sailboats - Blue



170710.12

Four Tile

Landscape - Blue

Nelis' Imports

12350 James Street Holland MI 49424
ph: 616.392.6051 e-mail: wholesale@dutchvillage.com

This wholesale catalog is available as a pdf and may be viewed or printed directly from our website at wholesale.dutchvillage.com. Prices can change without notice. © Nelis' Dutch Village

Wholesale Tile Guide

Last Revised: February 13 2024

Page 41 of 43

Nelis' Dutch Village Imported Delft Tiles

TERMS & CONDITIONS OF SALE

Quantities, Variation & Uniformity:

While Nelis' Dutch Village is willing to assist in the estimation of the number of tiles needed, the responsibility for the final order quantities rests with the customer. We recommend that you work with a designer, architect, or tile setter for the most accurate calculations. An extra 5% to 10% is recommended to use for cuts, and as attic stock for the possibility that it may be needed in the future.

Slight variations are normal in hand-formed, hand-made tiles, and can be seen in the tile shape and thickness. Little variation is seen in machine-made tiles. Hand work is exactly that, and a purchaser should welcome the human element in the hand-forming process.

Each factory has a standard background color of the tiles, and historically, there has been very little variation in background color of the tiles. Decorations on the tiles do vary slightly in color from shipment to shipment, and over the years, in a large part due to the particular production process. Screen-printed tiles have less variation, while hand-painting inherently has more variation. Again, variation in hand-painting is an example of the human element in production and should be welcomed.

Other variations can include thickness and a surface texture known as crazing. These tile variations in color, shading, crazing or thickness are inherent characteristics of the delftware production process, and therefore are not considered defects. These variations add character and charm, whereas absolute uniformity reflects mass production techniques.

Lead Time:

If tiles are in-stock, we generally ship within two business days. Special orders from the Netherlands require a minimum of 12 to 16 weeks for delivery. Stock levels will vary over the course of a year, and specific scenes may not be in-stock at any given time. We recommend placing your order as far in advance as possible.

Please be aware that Nelis' Dutch Village will not be liable for any delay in delivery due to any causes beyond our control, including; acts of God, governmental bodies (i.e. U.S. Customs), delays in production or shipping, or delivery delays caused by strikes or accidents. In the event of any delay, Nelis Imports's allowed time for delivery or other performance shall be extended for a period equal to the duration of such delay.

Payment & Terms:

An order of in-stock merchandise requires payment in full prior to shipment to the customer. All special orders require a 50% deposit due upon placement of the order. The balance of the order, plus freight & handling, is due before shipment.

Nelis' Dutch Village Imported Delft Tiles

TERMS & CONDITIONS OF SALE Continued

Inspection Upon Delivery:

All contents of an order must be inspected immediately upon receipt for accuracy of materials ordered, including quality, color and quantity. If the shipment has been damaged, Nelis Imports must be contacted within five (5) business days after receipt of the materials to begin the claim process. All claims must be reported to our shipping department at either: info@dutchvillage.com or (616) 392-6051, from 9am to 4pm (EST) M - F. All broken materials and original packaging must be kept and notations must be made of any visible damage to the cartons.

In all cases, the customer or customer's representative should inspect the tile well before installation. No adjustments can be made once the material has been installed, as installation constitutes absolute acceptance of the product. Installation will damage the product, and any damaged merchandise cannot be returned.

Returns:

Special orders cannot be returned. These orders are non-refundable. Once a special order has been delivered by the factory, the merchandise has been specifically made for each customer. Both the customer and Nelis' Dutch Village will be in agreement as to whether tiles are considered being special-ordered before the 50% deposit is collected, and therefore if a special order is cancelled after a deposit is placed on an order, this deposit is non-refundable.

Stock tiles may be returned with prior written or verbal authorization only, and only within thirty (30) days of receipt. All approved returns are subject to a 15% restocking fee. Freight charges incurred to ship the order to the customer will not be refunded, and costs from the shipping location back to Nelis' Dutch Village are the responsibility of the customer. If a tile is received back damaged or unsalable, it will not be refunded. The customer is encouraged to spend as much care as we do in packing the materials when being returned.