



2024  
Wholesale

12350 James St.  
Holland MI 49424  
phone: 616.392.6051  
wholesale@dutchvillage.com

## DEWIT HANDPAINTED DELFTWARE



VASES

PITCHERS

Nelis Imports

COVERED JARS

TEAPOTS

# Welkom!

We are pleased that you are interested in our imported Netherlands products. This catalog represents our beautiful line of imported DeWit Handpainted Delftware.

When you have selected items that you would like to order, please contact our friendly customer service:

Ph: (616) 392-6051

e-mail: [wholesale@dutchvillage.com](mailto:wholesale@dutchvillage.com)

[wholesale.dutchvillage.com](http://wholesale.dutchvillage.com)

Nelis Imports

12350 James Street

Holland MI 49424

This catalog represents just one of our Dutch merchandise product lines. For all of our product lines, we constantly update our catalogs on the internet.

You can view and/or print our catalogs directly from the web at [wholesale.dutchvillage.com](http://wholesale.dutchvillage.com).

We appreciate your interest. Please let us know if we can assist you as you consider new items for gifts or for an addition to your delftware collection.

Sincerely, Nelis Imports

## DeWit Handpainted Delftware

Sometimes the term delftware is used to describe any blue and white ceramic item. However, authentic beautiful delftware is hand painted by experienced artists and tin-glazed by a process developed over centuries. The results are one-of-a-kind items treasured by knowledgeable owners.

Delftware is named for the Dutch city of Delft. In the late 16th century, prohibition closed Dutch breweries. Many of the vacated buildings were used by the fledgling, but growing delftware industry. The development of the tin-glazing techniques evolved slowly through many countries from the Orient to Italy. It was perfected by Dutch artisans.

The handpainted delftware sold by Nelis Imports is made in Holland by the DeWit Company. DeWit has a long European tradition. They excel as a high quality but affordable producer of the beautiful unique pieces shown in this catalog

All authentic DeWit delft products are of true Dutch origin and are exquisitely hand painted. They can be identified by an imprint showing the factory mark, item number, and the artist's initials. The DeWit imprint is shown here.

We also provide a "DeWit Certificate of Authenticity" with each piece you order.



The handpainted delft pictured in this catalog represent designs created by artists for the DeWit Company. Please keep in mind that designs will vary by artist and from each shipment received.

*Nelis' Imports*

12350 James Street Holland MI 49424  
ph: 616.392.6051 e-mail: [wholesale@dutchvillage.com](mailto:wholesale@dutchvillage.com)

This wholesale catalog is available as a pdf and may be viewed or printed directly from our website at [wholesale.dutchvillage.com](http://wholesale.dutchvillage.com). Prices can change without notice. © Nelis' Dutch Village

Catalog "D" - Handpainted DeWit Delftware

Last Revised: January 26 2024

Page 2 of 28

# Blue and Red Tulips



011839.13  
5.75" H - Ribbed Vase  
\$48.50



011839.23  
5.75" H - Ribbed Vase  
\$48.50



011841.13  
7.5" H - Ribbed Vase  
\$72.00



011841.23  
7.5" H - Ribbed Vase  
\$72.00



011950.13  
4.75" H  
\$36.00



011950.23  
4.75" H  
\$36.00



011948.13  
7" H  
\$56.00



011948.23  
7" H  
\$56.00



010948.13  
9" H  
\$85.00



010948.23  
9" H  
\$85.00



010950.13  
6.75" H  
\$54.00



010950.23  
6.75" H  
\$54.00

*Nelis' Imports*

12350 James Street Holland MI 49424  
ph: 616.392.6051 e-mail: [wholesale@dutchvillage.com](mailto:wholesale@dutchvillage.com)

This wholesale catalog is available as a pdf and may be viewed or printed directly from our website at [wholesale.dutchvillage.com](http://wholesale.dutchvillage.com). Prices can change without notice. © Nelis' Dutch Village

Catalog "D" - Handpainted DeWit Delftware

Last Revised: January 26 2024

Page 3 of 28

# Blue and Red Tulips



010781.13  
5.5" H  
\$70.00



010781.23  
5.5" H  
\$70.00



011490.13  
Wood Rack w/3 Drawers  
\$87.00



011420.13  
Tea For One  
\$96.00



011420.23  
Tea for One  
\$96.00



011490.23  
Wood Rack w/3 Drawers  
\$87.00



010930.13  
Square Tapas Dish  
\$40.00



010931.13  
Double Tapas Tray  
\$70.00



010930.23  
Square Tapas Dish  
\$40.00



010931.23  
Double Tapas Tray  
\$70.00

*Nelis' Imports*

12350 James Street Holland MI 49424  
ph: 616.392.6051 e-mail: [wholesale@dutchvillage.com](mailto:wholesale@dutchvillage.com)

This wholesale catalog is available as a pdf and may be viewed or printed directly from our website at [wholesale.dutchvillage.com](http://wholesale.dutchvillage.com). Prices can change without notice. © Nelis' Dutch Village

Catalog "D" - Handpainted DeWit Delftware

Last Revised: January 26 2024

Page 4 of 28

# Blue and Red Tulips



010900.13  
Cheese Board  
\$34.00



010102.13  
4.75"  
\$20.00



010102.23  
4.75"  
\$20.00

## Ornaments



011523.13  
4.25"  
\$31.50



011523.23  
4.25"  
\$31.50



011524.13  
2.5"  
\$30.00



011524.23  
2.5"  
\$30.00



011527.23  
3"  
\$46.50



011526.13  
2.75"  
\$24.00



011526.23  
2.75"  
\$24.00



011550.13  
3"  
\$29.50



011550.23  
3"  
\$29.50

*Nelis' Imports*

12350 James Street Holland MI 49424  
ph: 616.392.6051 e-mail: [wholesale@dutchvillage.com](mailto:wholesale@dutchvillage.com)

This wholesale catalog is available as a pdf and may be viewed or printed directly from our website at [wholesale.dutchvillage.com](http://wholesale.dutchvillage.com). Prices can change without notice. © Nelis' Dutch Village

Catalog "D" - Handpainted DeWit Delftware

Last Revised: January 26 2024

Page 5 of 28

# Covered Jars



010280.11  
12.5" H  
\$83.50



010246.11  
13" H  
\$92.00



010246.12  
13" H  
\$92.00



010948.12  
9.5" H  
\$47.00



010086.11  
6" H  
\$21.00



010086.12  
6" H  
\$21.00



010086.21  
6" H  
\$25.50



010086.22  
6" H  
\$25.50

*Nelis' Imports*

12350 James Street Holland MI 49424  
ph: 616.392.6051 e-mail: [wholesale@dutchvillage.com](mailto:wholesale@dutchvillage.com)

This wholesale catalog is available as a pdf and may be viewed or printed directly from our website at [wholesale.dutchvillage.com](http://wholesale.dutchvillage.com). Prices can change without notice. © Nelis' Dutch Village

Catalog "D" - Handpainted DeWit Delftware

Last Revised: January 26 2024

Page 6 of 28

# Covered Jars



010078.11  
15" H  
\$80.00



010078.12  
15" H  
\$80.00



010078.21  
15" H  
\$85.50



010078.22  
15" H  
\$85.50



010254.11  
11" H  
\$51.00



010254.12  
11" H  
\$51.00



010947.12  
12.5" H  
\$83.50



010284.12  
5.5" H  
\$48.00



010666.12  
3.5" H  
\$34.00

*Nelis' Imports*

12350 James Street Holland MI 49424  
ph: 616.392.6051 e-mail: [wholesale@dutchvillage.com](mailto:wholesale@dutchvillage.com)

This wholesale catalog is available as a pdf and may be viewed or printed directly from our website at [wholesale.dutchvillage.com](http://wholesale.dutchvillage.com). Prices can change without notice. © Nelis' Dutch Village

Catalog "D" - Handpainted DeWit Delftware

Last Revised: January 26 2024

Page 7 of 28

# Canisters



010511.1K  
5" x 5"  
\$38.50



010511.1M  
5" x 5"  
\$38.50



010511.1S  
5" x 5"  
\$38.50



010511.1T  
5" x 5"  
\$38.50



010503.12  
8.25" H  
\$85.00



010503.1K  
8.25" H  
\$85.00



010902.1C  
8" H  
\$73.50



010902.1K  
8" H  
\$73.50

# Planters



010098.11  
7.75" H  
\$64.00



010098.12  
7.75" H  
\$64.00



010186.11  
5.75" H  
\$40.00



010186.12  
5.75" H  
\$40.00



010202.11  
5.25" H  
\$42.00



010202.12  
5.25" H  
\$42.00



010203.11  
6.25" H  
\$47.00



010203.12  
6.25" H  
\$47.00



010097.11  
5.5" H  
\$46.00



010097.12  
5.5" H  
\$46.00

*Nelis' Imports*

This wholesale catalog is available as a pdf and may be viewed or printed directly from our website at [wholesale.dutchvillage.com](http://wholesale.dutchvillage.com). Prices can change without notice. © Nelis' Dutch Village

12350 James Street Holland MI 49424  
ph: 616.392.6051 e-mail: [wholesale@dutchvillage.com](mailto:wholesale@dutchvillage.com)

Catalog "D" - Handpainted DeWit Delftware

Last Revised: January 26 2024

Page 8 of 28



# Pitchers



010767.11  
7.25" H  
\$50.00



010767.12  
7.25" H  
\$50.00



010268.11  
8.25" H  
\$47.00



010268.12  
8.25" H  
\$47.00



010767.21  
7.25" H  
\$51.00



010767.22  
7.25" H  
\$51.00



010091.11  
7.5" H  
\$31.50



010091.12  
7.5" H  
\$31.50



010701.11  
4.75" H  
\$23.50



010701.12  
4.75" H  
\$23.50



010242.11  
6.25" H  
\$29.00



010242.12  
6.25" H  
\$29.00



010701.21  
4.75" H  
\$31.50



010701.22  
4.75" H  
\$31.50



010242.21  
6.25" H  
\$34.50



010242.22  
6.25" H  
\$34.50

*Nelis' Imports*

12350 James Street Holland MI 49424  
ph: 616.392.6051 e-mail: [wholesale@dutchvillage.com](mailto:wholesale@dutchvillage.com)

This wholesale catalog is available as a pdf and may be viewed or printed directly from our website at [wholesale.dutchvillage.com](http://wholesale.dutchvillage.com). Prices can change without notice. © Nelis' Dutch Village

Catalog "D" - Handpainted DeWit Delftware

Last Revised: January 26 2024

Page 9 of 28

# Pitchers



010084.11  
6" H  
\$31.50



010084.12  
6" H  
\$31.50



010702.11  
6.5" H  
\$34.50



010702.12  
6.5" H  
\$34.50



010703.11  
7.5" H  
\$45.00



010703.12  
7.5" H  
\$45.00



010092.11  
10.5" H  
\$69.00



010257.11  
10" H  
\$68.50



010257.12  
10" H  
\$68.50

# Vases



010345.11  
5.5" H  
\$29.50



010345.12  
5.5" H  
\$29.50



010345.21  
5.5" H  
\$32.00



010345.22  
5.5" H  
\$32.00



010050.11  
8.5" H  
\$54.50



010050.12  
8.5" H  
\$54.50



010039.11  
10" H  
\$80.00



010039.12  
10" H  
\$80.00



010054.11  
6" H  
\$28.50



010054.12  
6" H  
\$28.50



011945.11  
12" H  
\$65.50



011945.12  
12" H  
\$65.50



010095.11  
12" H  
\$80.00



010946.12  
14.25" H  
\$47.50

*Nelis' Imports*

This wholesale catalog is available as a pdf and may be viewed or printed directly from our website at [wholesale.dutchvillage.com](http://wholesale.dutchvillage.com). Prices can change without notice. © Nelis' Dutch Village

12350 James Street Holland MI 49424  
ph: 616.392.6051 e-mail: [wholesale@dutchvillage.com](mailto:wholesale@dutchvillage.com)

Catalog "D" - Handpainted DeWit Delftware

Last Revised: January 26 2024

Page 11 of 28

# Vases



010025.11  
4.5" H  
\$12.50



010025.12  
4.5" H  
\$12.50



010381.11  
5.5" H  
\$23.50



010381.12  
5.5" H  
\$23.50



010381.21  
5.5" H  
\$24.00



010381.22  
5.5" H  
\$24.00



010025.21  
4.5" H  
\$13.00



010025.22  
4.5" H  
\$13.00



010089.11  
8" H  
\$37.50



010089.12  
8" H  
\$37.50



010089.21  
8" H  
\$40.00



010089.22  
8" H  
\$40.00



010251.11  
7" H  
\$24.50



010251.12  
7" H  
\$24.50



010502.11  
6.25" H  
\$26.50



010502.12  
6.25" H  
\$26.50



010502.21  
6.25" H  
\$29.00



010502.22  
6.25" H  
\$29.00



010080.11  
6" H  
\$19.50



010080.12  
6" H  
\$19.50



010052.11  
8.75" H  
\$56.00



010052.12  
8.75" H  
\$56.00



010096.11  
8" H  
\$33.50



010096.12  
8" H  
\$33.50

*Nelis' Imports*

This wholesale catalog is available as a pdf and may be viewed or printed directly from our website at [wholesale.dutchvillage.com](http://wholesale.dutchvillage.com). Prices can change without notice. © Nelis' Dutch Village

12350 James Street Holland MI 49424  
ph: 616.392.6051 e-mail: [wholesale@dutchvillage.com](mailto:wholesale@dutchvillage.com)

Catalog "D" - Handpainted DeWit Delftware

Last Revised: January 26 2024

Page 12 of 28

# Vases



011948.11  
7" H  
\$32.00



010715.11  
7" H  
\$37.50



010715.12  
7" H  
\$37.50



010715.21  
7" H  
\$41.00



010715.22  
7" H  
\$41.00



011948.12  
7" H  
\$32.00



010501.11  
10.25" H  
\$58.00



010501.12  
10.25" H  
\$58.00



010501.21  
10.25" H  
\$64.00



010501.22  
10.25" H  
\$64.00



011947.12  
9" H  
\$49.00



010200.11  
11" H  
\$57.50



010200.12  
11" H  
\$57.50



010200.21  
11" H  
\$66.50



010200.22  
11" H  
\$66.50

*Nelis' Imports*

12350 James Street Holland MI 49424  
ph: 616.392.6051 e-mail: [wholesale@dutchvillage.com](mailto:wholesale@dutchvillage.com)

This wholesale catalog is available as a pdf and may be viewed or printed directly from our website at [wholesale.dutchvillage.com](http://wholesale.dutchvillage.com). Prices can change without notice. © Nelis' Dutch Village

Catalog "D" - Handpainted DeWit Delftware

Last Revised: January 26 2024

Page 13 of 28

# Museum Quality Unica Tea and Coffee Pieces



3.5" H      012762.41      4" H  
 \$110.50



012502.42  
 Tea Canister  
 3.75" H  
 \$48.50



3.5" H      012762.42      4" H  
 \$110.50



011420.41  
 Tea For One - 5" H  
 \$93.00



011420.42  
 Tea For One - 5" H  
 \$62.50



012761.41  
 6.25" H  
 \$98.50



012761.42  
 6.25" H  
 \$98.50

*Nelis' Imports*

12350 James Street Holland MI 49424  
 ph: 616.392.6051 e-mail: [wholesale@dutchvillage.com](mailto:wholesale@dutchvillage.com)

This wholesale catalog is available as a pdf and may be viewed or printed directly from our website at [wholesale.dutchvillage.com](http://wholesale.dutchvillage.com). Prices can change without notice. © Nelis' Dutch Village

Catalog "D" - Handpainted DeWit Delftware

Last Revised: January 26 2024

Page 14 of 28

# Teapots



010760.11  
10" H  
\$70.00



010751.11  
7.5" H  
\$49.00



010751.12  
7.5" H  
\$49.00



010760.12  
10" H  
\$70.00



010771.11  
5.5" H  
\$59.00



010771.12  
5.5" H  
\$59.00



010751.22  
7.5" H  
\$59.00



010761.11  
6.25" H  
\$61.00



010761.12  
6.25" H  
\$61.00



010761.21  
6.25" H  
\$64.00



010761.22  
6.25" H  
\$64.00

*Nelis' Imports*

12350 James Street Holland MI 49424  
ph: 616.392.6051 e-mail: [wholesale@dutchvillage.com](mailto:wholesale@dutchvillage.com)

This wholesale catalog is available as a pdf and may be viewed or printed directly from our website at [wholesale.dutchvillage.com](http://wholesale.dutchvillage.com). Prices can change without notice. © Nelis' Dutch Village

Catalog "D" - Handpainted DeWit Delftware

Last Revised: January 26 2024

Page 15 of 28

# Sugar and Creamer Pieces



010752.11  
4" H  
\$44.00



010752.12  
4" H  
\$44.00



010762.11  
5" H  
\$72.50



010762.12  
5" H  
\$72.50



010762.21  
5" H  
\$78.00



010762.22  
5" H  
\$78.00



010569.11  
4" H  
\$20.00



010569.12  
4" H  
\$20.00



010569.21  
4" H  
\$21.00



010569.22  
4" H  
\$21.00

*Nelis' Imports*

12350 James Street Holland MI 49424  
ph: 616.392.6051 e-mail: [wholesale@dutchvillage.com](mailto:wholesale@dutchvillage.com)

This wholesale catalog is available as a pdf and may be viewed or printed directly from our website at [wholesale.dutchvillage.com](http://wholesale.dutchvillage.com). Prices can change without notice. © Nelis' Dutch Village

Catalog "D" - Handpainted DeWit Delftware

Last Revised: January 26 2024

Page 16 of 28



# Mugs and Cups



010777.11  
4" H  
\$19.50



010777.12  
4" H  
\$19.50



015246  
5" H  
Dutch Way of Life Stein  
\$18.50



011777.14  
4" H  
\$18.50



010778.11  
4" H  
\$23.50



010778.12  
4" H  
\$23.50



011777.15  
4" H  
\$18.50



010779.11  
3.5" H  
\$16.50



010757.11  
3" H  
\$38.00



011779.14  
3" H  
\$17.50



011776.14  
Mini Cup & Saucer  
Bicycle  
\$24.00



010757.12  
3" H  
\$38.00



011779.15  
3" H  
\$17.50

*Nelis' Imports*

12350 James Street Holland MI 49424  
ph: 616.392.6051 e-mail: [wholesale@dutchvillage.com](mailto:wholesale@dutchvillage.com)

This wholesale catalog is available as a pdf and may be viewed or printed directly from our website at [wholesale.dutchvillage.com](http://wholesale.dutchvillage.com). Prices can change without notice. © Nelis' Dutch Village

Catalog "D" - Handpainted DeWit Delftware

Last Revised: January 26 2024

Page 17 of 28

# Plates and Dishes



010406.11  
6.25" W  
\$34.00



010406.12  
6.25" W  
\$34.00



010327.11  
10.5" W  
\$61.50



010923.11  
5.5" W  
\$25.00



010923.12  
5.5" W  
\$25.00



010318.11  
7" W  
\$29.50



010318.12  
7" W  
\$29.50



010327.12  
10.5" W  
\$61.50



010322.11  
8.75" W  
\$40.50



010322.12  
8.75" W  
\$40.50



012909.42  
7" Octagonal Dish  
\$63.00

*Nelis' Imports*

This wholesale catalog is available as a pdf and may be viewed or printed directly from our website at [wholesale.dutchvillage.com](http://wholesale.dutchvillage.com). Prices can change without notice. © Nelis' Dutch Village

12350 James Street Holland MI 49424  
ph: 616.392.6051 e-mail: [wholesale@dutchvillage.com](mailto:wholesale@dutchvillage.com)

Catalog "D" - Handpainted DeWit Delftware

Last Revised: January 26 2024

Page 18 of 28

# Plates and Appliques



010404.11  
12" Diameter - 2" Deep Plate  
\$94.00



010404.12  
12" Diameter - 2" Deep Plate  
\$94.00



010404.21  
12" Diameter - 2" Deep Plate  
\$101.50



010404.22  
12" Diameter - 2" Deep Plate  
\$101.50



012046.41  
Unica Applique  
10.5" H x 8.75" W  
\$193.00



012046.42  
Unica Applique  
10.5" H x 8.75" W  
\$193.00

***Designs are handpainted  
and may vary from those  
pictured.***

*Nelis' Imports*

12350 James Street Holland MI 49424  
ph: 616.392.6051 e-mail: [wholesale@dutchvillage.com](mailto:wholesale@dutchvillage.com)

This wholesale catalog is available as a pdf and may be viewed or printed directly from our website at [wholesale.dutchvillage.com](http://wholesale.dutchvillage.com). Prices can change without notice. © Nelis' Dutch Village

Catalog "D" - Handpainted DeWit Delftware

Last Revised: January 26 2024

Page 19 of 28



010775.11  
10" Plate Clock  
\$72.50



010775.12  
10" Plate Clock  
\$72.50



010775.21  
10" Plate Clock  
\$82.00



010515.11  
Butter Dish - 4" D  
\$41.00



010515.12  
Butter Dish - 4" D  
\$41.00



010549.11  
Napkin Holder - 4.25" H  
\$28.00



010549.12  
Napkin Holder - 4.25" H  
\$28.00



010562.11  
Salt & Pepper - 3.25" H  
\$31.00



010562.12  
Salt & Pepper - 3.25" H  
\$31.00



010951.12  
8" H  
\$32.00



010951.22  
8" H  
\$36.00



010954.12  
5.5" H  
\$19.50



010957.11  
4.25" H  
\$18.50



010957.12  
4.25" H  
\$18.50



010568.11 Spoon Rack  
7.75" L x 3.75" H  
\$21.00



010568.12 Spoon Rack  
7.75" L x 3.75" H  
\$21.00



010006.11  
4" H  
\$14.50



010006.12  
4" H  
\$14.50



010169.11  
5" H  
\$45.50



010169.12  
5" H  
\$45.50



010005.11  
5" H  
\$16.50



010005.12  
5" H  
\$16.50



010567.21  
8.25" L  
\$19.50



010567.11  
8.25" L  
\$17.00



010005.21  
5" H  
\$18.50



010005.22  
5" H  
\$18.50



010567.22  
8.25" L  
\$19.50



010567.12  
8.25" L  
\$17.00

*Nelis' Imports*

12350 James Street Holland MI 49424  
ph: 616.392.6051 e-mail: [wholesale@dutchvillage.com](mailto:wholesale@dutchvillage.com)

This wholesale catalog is available as a pdf and may be viewed or printed directly from our website at [wholesale.dutchvillage.com](http://wholesale.dutchvillage.com). Prices can change without notice. © Nelis' Dutch Village

Catalog "D" - Handpainted DeWit Delftware

Last Revised: January 26 2024

Page 21 of 28



010102.11  
4.75" L  
\$16.00



010102.12  
4.75" L  
\$16.00



010102.21  
4.75" L  
\$17.00



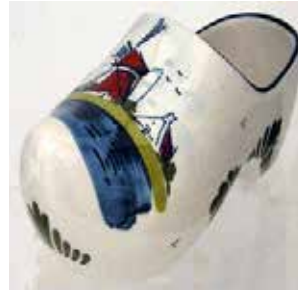
010105.11  
8.5" L  
\$24.00



010104.11  
6.75" L  
\$20.50



010104.12  
6.75" L  
\$20.50



010104.21  
6.75" L  
\$22.50



010105.21  
8.5" L  
\$30.00



010563.12  
Dancing Trio - 3" H  
\$37.00



010558.12  
Dutch Couple - 4" H  
\$28.50



010565.13  
Kissing Kids - 6.75" H  
\$46.00



010566.13  
Kissing Kids - 4.25" H  
\$40.00



011481.12  
VW Van  
\$65.50



010565.12  
Kissing Kids - 6.75" H  
\$40.50



010566.12  
Kissing Kids - 4.25" H  
\$30.00

Nelis' Imports

12350 James Street Holland MI 49424  
ph: 616.392.6051 e-mail: [wholesale@dutchvillage.com](mailto:wholesale@dutchvillage.com)

This wholesale catalog is available as a pdf and may be viewed or printed directly from our website at [wholesale.dutchvillage.com](http://wholesale.dutchvillage.com). Prices can change without notice. © Nelis' Dutch Village

Catalog "D" - Handpainted DeWit Delftware

Last Revised: January 26 2024

Page 22 of 28



010660.12  
9" H  
\$34.00



010673.12  
4" H  
\$18.00



010680.12  
6.25" H  
\$34.00



010799.12  
4" H  
\$22.50



010683.12  
6.25" H  
\$29.50



011712.11  
3" H  
\$24.00

\*\*egg stand sold separately



011712.12  
3" H  
\$24.00



010792.12  
Dachshund Dog  
\$59.50



010699.12  
6" L x 5" H  
\$48.50



010698.12  
9" L x 7.5" H  
\$84.50



011710  
5/8" H  
\$5.00



010712.12  
Penguin  
4.25" H  
\$24.00



010714.12  
Penguins,  
asst'd- 2.5"  
\$14.00



010903.12  
7.5" H  
\$21.50



010903.22  
7.5" H  
\$24.00



011450.12  
Christmas Tree w/mice  
15" H  
\$95.50



010732.12  
Giraffe  
3.75" H  
\$33.00



010583.12  
Elephant  
3" H  
\$29.00



010690.12  
Kitten - Asst'd  
\$30.50



010733.42  
Mouse  
\$31.50



010740.12  
Butterfly  
\$31.50



010740.22  
Butterfly  
\$48.00

Nelis' Imports

12350 James Street Holland MI 49424  
ph: 616.392.6051 e-mail: [wholesale@dutchvillage.com](mailto:wholesale@dutchvillage.com)

This wholesale catalog is available as a pdf and may be viewed or printed directly from our website at [wholesale.dutchvillage.com](http://wholesale.dutchvillage.com). Prices can change without notice. © Nelis' Dutch Village

Catalog "D" - Handpainted DeWit Delftware

Last Revised: January 26 2024

Page 23 of 28



010481.11  
11" H  
\$41.00



010855.12  
4" H  
\$11.00



010853.12  
8" H  
\$29.50



019856.11  
8.5" H - Musical  
\$35.00



019857.11  
7.5" H - Musical  
\$33.50



010481.21  
11" H  
\$44.50



010481.22  
11" H  
\$44.50



010851.12  
10" H  
\$40.00



010851.22  
10" H  
\$44.00



010859.12  
16.5" H  
\$76.00



010483.12  
9.5" H  
\$35.00



010859.22  
16.5" H  
\$81.50

*Nelis' Imports*

12350 James Street Holland MI 49424  
ph: 616.392.6051 e-mail: [wholesale@dutchvillage.com](mailto:wholesale@dutchvillage.com)

This wholesale catalog is available as a pdf and may be viewed or printed directly from our website at [wholesale.dutchvillage.com](http://wholesale.dutchvillage.com). Prices can change without notice. © Nelis' Dutch Village

Catalog "D" - Handpainted DeWit Delftware

Last Revised: January 26 2024

Page 24 of 28



# Handpainted Ornaments



011524.11  
2.5" D  
\$19.50



011524.12  
2.5" D  
\$19.50



011526.12  
2.75" D  
\$19.50



011527.11  
3" D  
\$30.50



011527.12  
3" D  
\$30.50



010004.11  
2.5" H  
\$18.00



010004.12  
2.5" H  
\$18.00



011580.11  
Star Ornament  
\$5.00



011523.11  
4.25" H  
\$23.00



011523.12  
4.25" H  
\$23.00



Front



Back

011523.HM  
4.25" H  
\$25.00



010004.21  
2.5" H  
\$21.00



010004.22  
2.5" H  
\$21.00



011542.12  
4" L  
\$13.50



011530.12  
Asst'd Flat Ornaments  
\$5.00



Front

011490.11  
Tree Topper  
6" H  
\$24.50



Back

Ornament Stand

011530  
8" H  
\$3.00



Nelis' Imports

This wholesale catalog is available as a pdf and may be viewed or printed directly from our website at [wholesale.dutchvillage.com](http://wholesale.dutchvillage.com). Prices can change without notice. © Nelis' Dutch Village

12350 James Street Holland MI 49424  
ph: 616.392.6051 e-mail: [wholesale@dutchvillage.com](mailto:wholesale@dutchvillage.com)

Catalog "D" - Handpainted DeWit Delftware

Last Revised: January 26 2024

Page 25 of 28

# Handpainted Christmas Figurines



011437.42  
10.5" H  
\$112.00



011488.12  
6.25" H  
\$29.50



011488.22  
6.25" H  
\$31.50



011488.42  
Unica Piece  
6.25" H  
\$52.00



Back



Front

011487.42  
12" H  
\$108.00



011489.12  
Tree Topper  
9.5" H  
\$54.00



011486.42  
16" H  
\$231.50



011436.42  
9" H  
\$47.50



011544.12  
4" H (asst)  
\$26.50



011443.12  
Joseph & Mary  
\$113.50



011605.12  
Nativity in Tree  
9" H  
\$64.00

*Nelis' Imports*

This wholesale catalog is available as a pdf and may be viewed or printed directly from our website at [wholesale.dutchvillage.com](http://wholesale.dutchvillage.com). Prices can change without notice. © Nelis' Dutch Village

12350 James Street Holland MI 49424  
ph: 616.392.6051 e-mail: [wholesale@dutchvillage.com](mailto:wholesale@dutchvillage.com)

Catalog "D" - Handpainted DeWit Delftware

Last Revised: January 26 2024

Page 26 of 28

# Handpainted Nativity Pieces

011546.12

Full 16 Piece Nativity Set

\$350.00



011465.12  
Standing Camel  
7" H  
\$41.00



011466.12  
Cow  
3.5" H  
\$24.00



011467.12  
Sheep  
3" H  
\$22.00



011468.12  
Goat  
2.5" H  
\$22.00



011469.12  
Sitting Camel  
4.25" H  
\$34.00



011470.12  
Donkey  
4" H  
\$27.50



011471.12  
Kneeling Angel  
4" H  
\$17.00



011472.12  
Baby Jesus  
3.25" W  
\$22.00



011473.12  
Wiseman #1  
6.25" H  
\$24.00



011474.12  
Shepherd  
6.25" H  
\$26.50



011475.12  
Wiseman #2  
6.25" H  
\$24.00



011476.12  
Wiseman #3  
4.75" H  
\$24.00



011477.12  
Joseph  
6.25" H  
\$25.00



011478.12  
Mary  
4.25" H  
\$22.00



011479.12  
Shepherd  
6" H  
\$22.00



011480.12  
Child Shepherd  
4.25" H  
\$22.00

Nelis' Imports

This wholesale catalog is available as a pdf and may be viewed or printed directly from our website at [wholesale.dutchvillage.com](http://wholesale.dutchvillage.com). Prices can change without notice. © Nelis' Dutch Village

12350 James Street Holland MI 49424  
ph: 616.392.6051 e-mail: [wholesale@dutchvillage.com](mailto:wholesale@dutchvillage.com)

Catalog "D" - Handpainted DeWit Delftware

Last Revised: January 26 2024

Page 27 of 28

# Unique Pieces



011460.13  
Lg Amphora Vase  
\$352.00



010776.13  
Amphora Vase  
\$260.50



012880.32  
18" L  
\$308.00

*Nelis' Imports*

12350 James Street Holland MI 49424  
ph: 616.392.6051 e-mail: [wholesale@dutchvillage.com](mailto:wholesale@dutchvillage.com)

This wholesale catalog is available as a pdf and may be viewed or printed directly from our website at [wholesale.dutchvillage.com](http://wholesale.dutchvillage.com). Prices can change without notice. © Nelis' Dutch Village

Catalog "D" - Handpainted DeWit Delftware

Last Revised: January 26 2024

Page 28 of 28